

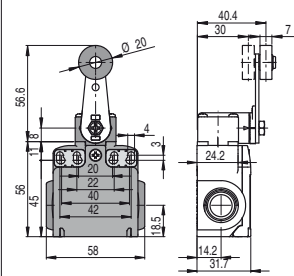


Contact type:

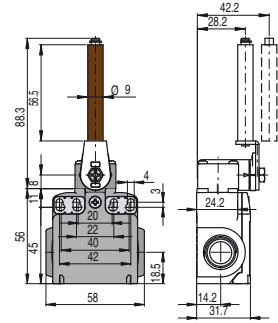
- R** = snap action
- L** = slow action
- LO** = slow action overlapped
- LS** = slow action shifted
- LV** = slow action shifted and spaced
- LI** = slow action independent
- LA** = slow action closer
- A** = electronic PNP

Contact blocks

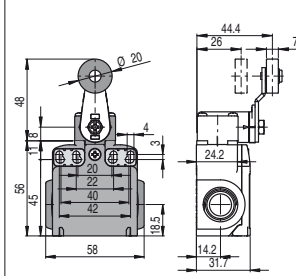
Other rollers available. See on page 94



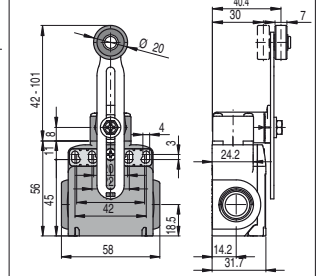
Porcelain roller



Other rollers available. See on page 94

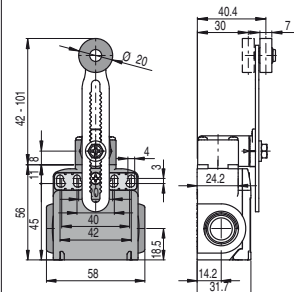


Other rollers available. See on page 94

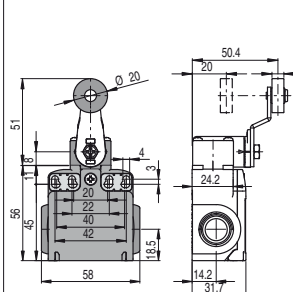


5	R	FX 552-M2	1NO+1NC	FX 553-E0M2V9	1NO+1NC	FX 554-M2	1NO+1NC	FX 555-M2	(1) 1NO+1NC
6	L	FX 652-M2	1NO+1NC	FX 653-E0M2V9	1NO+1NC	FX 654-M2	1NO+1NC	FX 655-M2	(1) 1NO+1NC
7	LO	FX 752-M2	1NO+1NC	FX 753-E0M2V9	1NO+1NC	FX 754-M2	1NO+1NC	FX 755-M2	(1) 1NO+1NC
9	L	FX 952-M2	2NC	FX 953-E0M2V9	2NC	FX 954-M2	2NC	FX 955-M2	(1) 2NC
10	L	FX 1052-M2	2NO	FX 1053-E0M2V9	2NO	FX 1054-M2	2NO	FX 1055-M2	2NO
11	R	FX 1152-M2	2NC	FX 1153-E0M2V9	2NO	FX 1154-M2	2NC	FX 1155-M2	(1) 2NC
12	R	FX 1252-M2	2NO	FX 1253-E0M2V9	2NO	FX 1254-M2	2NO	FX 1255-M2	2NO
13	LV	FX 1352-M2	2NC	FX 1353-E0M2V9	2NC	FX 1354-M2	2NC	FX 1355-M2	(1) 2NC
14	LS	FX 1452-M2	2NC	FX 1453-E0M2V9	2NC	FX 1454-M2	2NC	FX 1455-M2	(1) 2NC
15	LS	FX 1552-M2	2NO	FX 1553-E0M2V9	2NO	FX 1554-M2	2NO	FX 1555-M2	2NO
16	LI	FX 1652-M2	2NC			FX 1654-M2	2NC	FX 1655-M2	(1) 2NC
18	LA	FX 1852-M2	1NO+1NC	FX 1853-E0M2V9	1NO+1NC	FX 1854-M2	1NO+1NC	FX 1855-M2	(1) 1NO+1NC
20	L	FX 2052-M2	1NO+2NC	FX 2053-E0M2V9	1NO+2NC	FX 2054-M2	1NO+2NC	FX 2055-M2	(1) 1NO+2NC
21	L	FX 2152-M2	3NC	FX 2153-E0M2V9	3NC	FX 2154-M2	3NC	FX 2155-M2	(1) 3NC
22	L	FX 2252-M2	2NO+1NC	FX 2253-E0M2V9	2NO+1NC	FX 2254-M2	2NO+1NC	FX 2255-M2	(1) 2NO+1NC
2	R	FX 252-M2	2x(1NO-1NC)	FX 253-E0M2	2x(1NO-1NC)	FX 254-M2	2x(1NO-1NC)	FX 255-M2	2x(1NO-1NC)
E1	A	FX E152-M2	1NO-1NC	FX E153-E0M2V9	1NO-1NC	FX E154-M2	1NO-1NC	FX E155-M2	1NO-1NC
Max. speed		page 239 - type 1		0.5 m/s		page 239 - type 1		page 239 - type 1	
Min. force		0.06 Nm (0.25 Nm ⊕)		0.03 Nm (0.25 Nm ⊕)		0.06 Nm (0.25 Nm ⊕)		0.06 Nm (0.25 Nm ⊕)	
Travel diagrams		page 240 - group 5		page 240 - group 6		page 240 - group 5		page 240 - group 5	

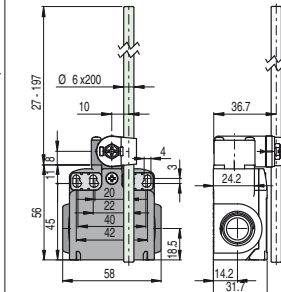
Other rollers available. See on page 94



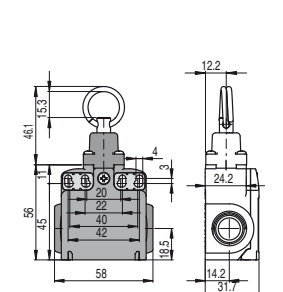
Other rollers available. See on page 94



Fiber glass rod



Rope switch for signalling



Contact blocks

5	R	FX 556-M2	1NO+1NC	FX 557-M2	1NO+1NC	FX 569-M2	1NO+1NC	FX 576-M2	1NO+1NC
6	L	FX 656-M2	1NO+1NC	FX 657-M2	1NO+1NC	FX 669-M2	1NO+1NC	FX 676-M2	1NO+1NC
7	LO	FX 756-M2	1NO+1NC	FX 757-M2	1NO+1NC	FX 769-M2	1NO+1NC	FX 776-M2	1NO+1NC
9	L	FX 956-M2	2NC	FX 957-M2	2NC	FX 969-M2	2NC	FX 976-M2	2NO
10	L	FX 1056-M2	2NO	FX 1057-M2	2NO	FX 1069-M2	2NO	FX 1076-M2	2NC
11	R	FX 1156-M2	2NC	FX 1157-M2	2NC	FX 1169-M2	2NC	FX 1176-M2	2NO
12	R	FX 1256-M2	2NO	FX 1257-M2	2NO	FX 1269-M2	2NO	FX 1276-M2	2NC
13	LV	FX 1356-M2	2NC	FX 1357-M2	2NC	FX 1369-M2	2NC	FX 1376-M2	2NO
14	LS	FX 1456-M2	2NC	FX 1457-M2	2NC	FX 1469-M2	2NC	FX 1476-M2	2NO
15	LS	FX 1556-M2	2NO	FX 1557-M2	2NO	FX 1569-M2	2NO	FX 1576-M2	2NC
16	LI	FX 1656-M2	2NC	FX 1657-M2	2NC	FX 1669-M2	2NC		
18	LA	FX 1856-M2	1NO+1NC	FX 1857-M2	1NC+1NO	FX 1869-M2	1NC+1NO	FX 1876-M2	1NO+1NC
20	L	FX 2056-M2	1NO+2NC	FX 2057-M2	1NO+2NC	FX 2069-M2	1NO+2NC	FX 2076-M2	2NO+1NC
21	L	FX 2156-M2	3NC	FX 2157-M2	3NC	FX 2169-M2	3NC	FX 2176-M2	3NO
22	L	FX 2256-M2	2NO+1NC	FX 2257-M2	2NO+1NC	FX 2269-M2	2NO+1NC	FX 2276-M2	1NO+2NC
2	R	FX 256-M2	2x(1NO-1NC)	FX 257-M2	2x(1NO-1NC)	FX 269-M2	2x(1NO-1NC)	FX 276-M2	2x(1NO-1NC)
E1	A	FX E156-M2	1NO-1NC	FX E157-M2	1NO-1NC	FX E169-M2	1NO-1NC		
Max. speed		page 239 - type 1		page 239 - type 1		1.5 m/s		0.5 m/s	
Min. force		0.06 Nm (0.25 Nm ⊕)		0.06 Nm (0.25 Nm ⊕)		0.06 Nm		initial 20 N - final 40 N	
Travel diagrams		page 240 - group 5		page 240 - group 5		page 240 - group 5		page 240 - group 7	

(1) Positive opening only with actuator set to max. See page 93.

All measures in the drawings are in mm

Accessories See page 225